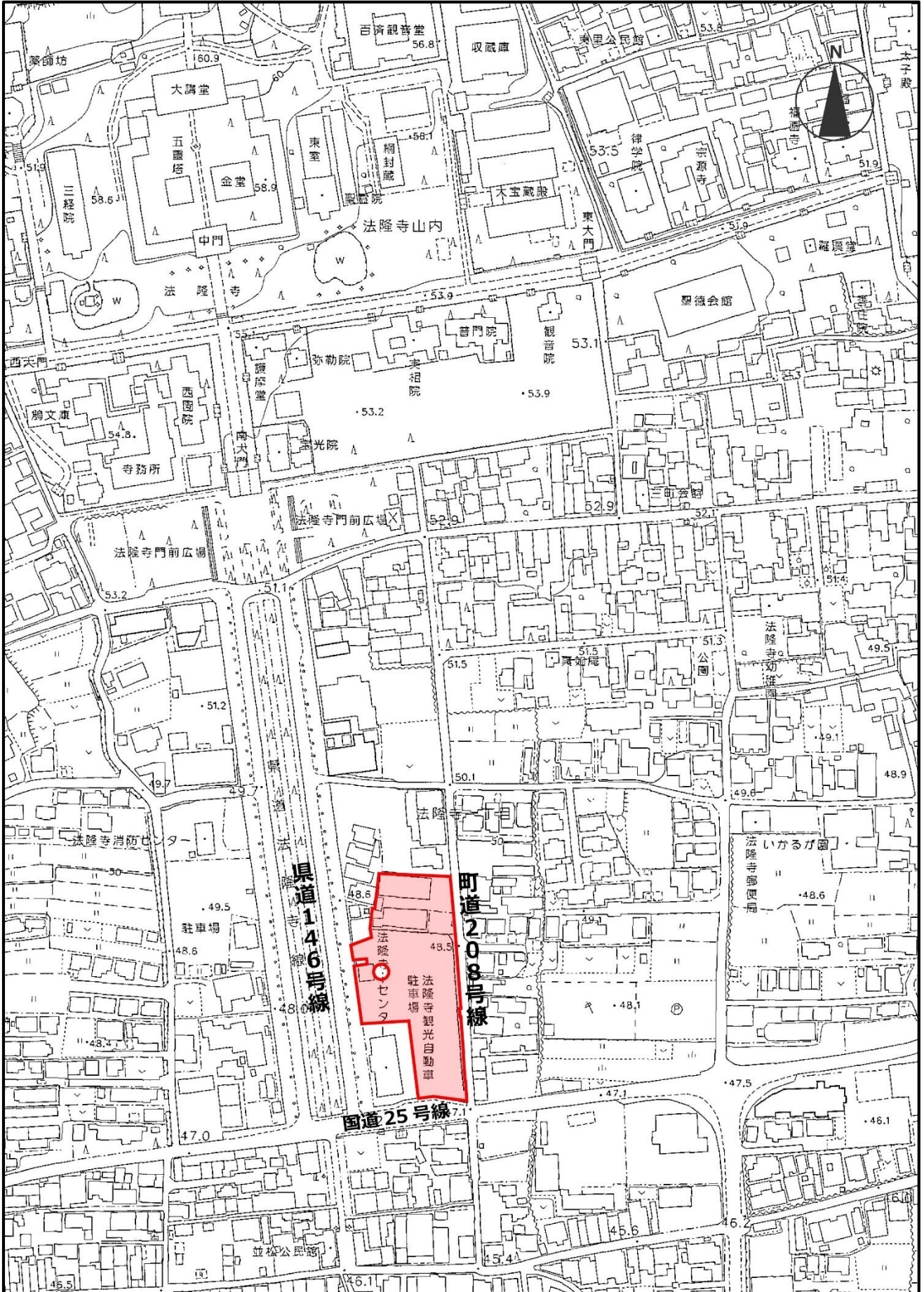


町有地位置図

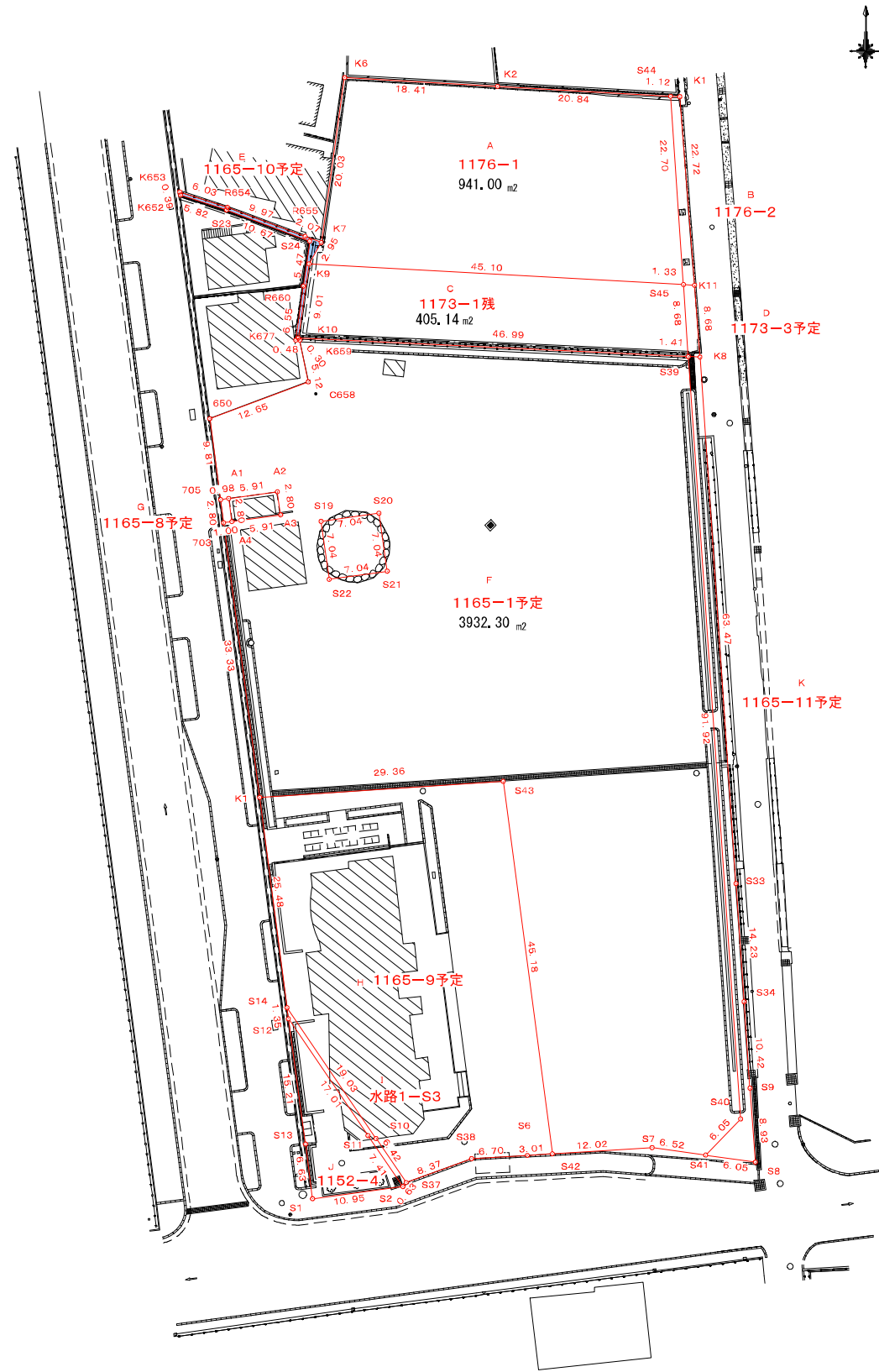
資料 1



町有地位置図(1/500)

生駒郡斑鳩町法隆寺一丁目
平成30年5月23日作成

全体計画 1/500



求積表

地番	A 1176-1			
NO	Xn	Yn	Yn+1-Yn-1	Xn * (Yn+1-Yn-1)
K6	-154091.391	-24267.741	21.200	-3266737.489200
K2	-154092.450	-24249.355	39.202	-6040732.224900
S44	-154093.630	-24228.539	22.373	-3447536.783990
S45	-154116.280	-24276.982	-43.476	6700359.389280
K9	-154113.788	-24272.015	-43.573	6715200.520254
K7	-154111.232	-24270.555	4.274	-658671.405568
合計				1882.005876
合計面積				941.0029380
地積				941.00 m2

地番	G 1165-8予定			
NO	Xn	Yn	Yn+1-Yn-1	Xn * (Yn+1-Yn-1)
705	-154142.149	-24282.662	0.607	-93564.284443
A1	-154142.014	-24281.691	1.355	-208862.428970
A4	-154144.790	-24281.307	-0.607	93565.887530
703	-154144.927	-24282.298	-1.355	208866.376085
合計				5.550202
合計面積				2.7751010
地積				2.77 m2

地番	B 1176-2			
NO	Xn	Yn	Yn+1-Yn-1	Xn * (Yn+1-Yn-1)
S44	-154093.630	-24228.539	-0.433	66722.541790
K1	-154093.694	-24227.415	2.888	-445022.588272
K11	-154116.353	-24225.651	0.433	-66732.380849
S45	-154116.280	-24226.982	-2.888	445087.816640
合計				55.389309
合計面積				27.6946545
地積				27.69 m2

地番	H 1165-9予定			
NO	Xn	Yn	Yn+1-Yn-1	Xn * (Yn+1-Yn-1)
K1	-154177.978	-24277.971	26.007	-4009706.673846
S43	-154176.035	-24248.668	35.215	-5428309.072525
S42	-154220.834	-24242.756	2.900	-447240.418600
S6	-154221.022	-24245.768	-9.710	1497486.123620
S38	-154221.416	-24252.466	-14.568	2246697.588288
S37	-154224.293	-24260.336	-11.496	1772962.472328
S10	-154218.988	-24263.962	-14.339	2211346.068932
S14	-154203.254	-24274.675	-14.009	2160233.385286
合計				2469.473463
合計面積				1234.7367415
地積				1234.73 m2

地番	C 1173-1残			
NO	Xn	Yn	Yn+1-Yn-1	Xn * (Yn+1-Yn-1)
K9	-154113.798	-24272.015	46.347	-7142712.195906
S45	-154116.280	-24226.982	45.628	-7032017.623840
S39	-154124.941	-24226.387	-46.347	7143228.640527
K10	-154122.720	-24273.329	-45.628	7032311.458160
合計				810.288941
合計面積				405.1444705
地積				405.14 m2

地番	I 水路1-S3			
NO	Xn	Yn	Yn+1-Yn-1	Xn * (Yn+1-Yn-1)
S14	-154203.254	-24274.675	10.542	-1625610.703668
S10	-154218.988	-24263.962	14.339	-2211346.068932
S37	-154224.293	-24260.336	3.213	-495522.653409
S2	-154224.773	-24260.749	-4.596	708817.065708
S11	-154218.656	-24264.932	-13.755	2121277.613280
S12	-154204.594	-24274.504	-9.743	1502415.359342
合計				30.603321
合計面積				15.3016605
地積				15.30 m2

地番	D 1173-3予定			
NO	Xn	Yn	Yn+1-Yn-1	Xn * (Yn+1-Yn-1)
S45	-154116.280	-24226.982	0.736	-113429.582080
K11	-154116.353	-24225.651	2.005	-309003.287765
K8	-154125.008	-24224.977	-0.736	113436.005888
S39	-154124.941	-24226.387	-2.005	309020.506705
合計				23.642748
合計面積				11.8213740
地積				11.82 m2

地番	J 1152-4			
NO	Xn	Yn	Yn+1-Yn-1	Xn * (Yn+1-Yn-1)
S12	-154204.594	-24274.504	7.516	-1159001.728504
S11	-154218.656	-24264.932	13.755	-2121277.613280
S2	-154224.773	-24260.749	-6.669	1028525.011137
S1	-154226.242	-24271.601	-11.699	1804292.805158
S13	-154219.665	-24272.448	-2.903	447699.687495
合計				238.162006
合計面積				119.0810030
地積				119.08 m2

地番	E 1165-10予定			
NO	Xn	Yn	Yn+1-Yn-1	Xn * (Yn+1-Yn-1)
K653	-154105.142	-24287.577	5.651	-870948.157442
R654	-154107.001	-24281.837	15.078	-2323625.361078
R655	-154110.495	-24272.499	11.282	-1738674.604590
K7	-154111.232	-24270.555	0.484	-74589.836288
K9	-154113.798	-24272.015	-2.774	427511.675652
K10	-154122.720	-24273.329	-1.127	173696.305440
K659	-154122.959	-24273.142	-0.302	46545.133618
K677	-154122.967	-24273.631	0.414	-63906.908339
R660	-154116.478	-24272.728	1.682	-259223.915996
S24	-154111.061	-24271.949	-0.219	1420749.871359
S23	-154107.316	-24281.947	-15.539	2394673.583324
K652	-154105.522	-24287.488	-6.630	867614.088960
合計				21.874521
合計面積				10.9372605
地積				10.93 m2

地番	K 1165-11予定			
NO	Xn	Yn	Yn+1-Yn-1	Xn * (Yn+1-Yn-1)
S39	-154124.941	-24226.387	-4.893	754133.336313
K8	-154125.008	-24224.977	5.747	-885756.420976
S33	-154188.337	-24220.640	5.310	-818740.069470
S34	-154202.539	-24219.667	1.685	-259831.278215
S9	-154212.941	-24218.955	1.368	-210963.303288
S8	-154221.848	-24218.299	-5.336	822927.780928
S41	-154221.000	-24224.291	-1.785	275284.485004
S40	-154216.649	-24220.084	-2.096	323238.096304
合計				292.625696
合計面積				146.3132890
地積				146.31 m2

地番	F 1165-1予定			
NO	Xn	Yn	Yn+1-Yn-1	Xn * (Yn+1-Yn-1)
K10	-154122.720	-24273.329	46.755	-7206007.773600
S39	-154124.941	-24226.387	53.245	-8206382.483545
S40	-154216.649	-24220.084	2.096	-323238.096304
S41	-154221.000	-24224.291	-10.672	1645846.512000
S7	-154220.086	-24230.756	-18.465	2847673.887990
S42	-154220.834	-24242.756	-17.912	2762403.578608
S43	-154176.035	-24248.668	-35.215	5429309.072525
K1	-154177.978	-24277.971	-20.923	3225865.833694
S22	-154151.731	-24269.591	15.352	-236537.374312
S21	-154150.752	-24262.619	5.983	-922283.940216
S20	-154143.780	-24263.608	-7.962	1227292.776360
S19	-154144.757	-24270.581	-6.983	922248.081131
S22	-154151.731	-24269.591	-7.390	1139181.292090
K1	-154177.978	-24277.971	-12.707	1959139.566446
703	-154144.927	-24282.298	-3.336	514227.476472
A4	-154144.790	-24281.307	6.852	-1056200.101080
A3	-154143.979	-24275.446	5.477	-844246.572983
A2	-154141.204	-24275.830	-6.245	962611.818980
A1	-154142.014	-24281.691	-6.832	1053098.239648
705	-154142.149	-24282.662	-2.277	350981.673273
650	-154132.417	-24283.968	10.546	-1625480.469682
C658	-154127.981	-24272.116	10.826	-1668589.522306
K659	-154122.959	-24273.142	-1.213	186951.149267
合計				7864.615456
合計面積				3932.3077280
地積				3932.30 m2

町有地は、S44, K2, K6, K7, K9, K10, K659, C658, 650, 705, A1, A2, A3, A4, 703, K1, S43, S42, S7, S41, S40, S39, S45で囲まれる範囲(ただし、S20, S19, S22, S21を除く)